



# CONVENTIONAL

Valid as of 01.04.2019

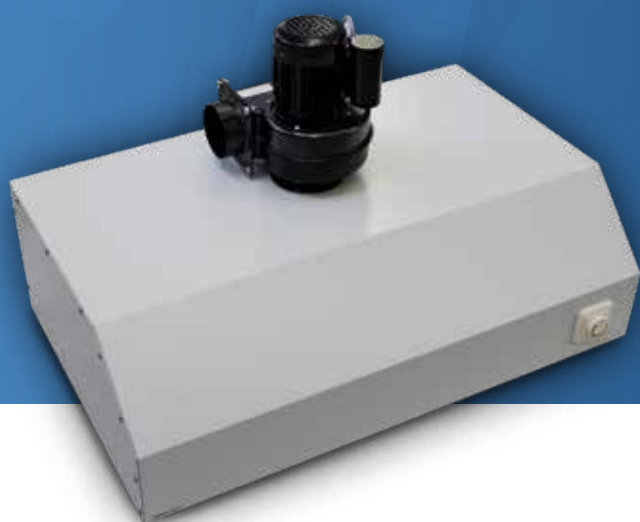
# PREHEATING FURNACES



- ▼ Max. temperature 1150 °C
- ▼ Thermocouple PtRh-Pt, type S
- ▼ Individually controlled outlets for additional devices
- ▼ Timer function

Program control		M1	P7
Display		7-segment LED	4-lines LCD
Programm numbers		×	30
Steps and holding times		1	4
Individual heat-rate settings		×	1-30 °C/min per step
frequency (Hz)		50/60	50/60
Technical data		KM	GL
Numbers of muffles		4 pieces 6x	6 pieces 9x
Dimension heating-chamber W/D/H	mm	150/170/100	200/250/110
Power max.	W	1600	2600
Voltage range	V	200-240	200-240
Weight	kg	31	70
Dimensions W/D/H	mm	400/400/480	480/520/580

# EXTRACTOR HOODS



- ▼ Freely adjustable extraction power
- ▼ Stainless steel housing
- ▼ Powerful radial fan

✓ = standard   ● = optionally available   ⇄ = optionally available, but with reservations   ✗ = not compatible

Technical data		DU1	DU2	DU3/2	DU3/3
Max. air capacity/min	m <sup>3</sup>	7	14	20	20
Exhaust pipe Ø	mm	100	100	140	140
99h-timer		●	●	✓	✓
Grease filters		✗	✗	✓	✓
Power max.	W	120	280	370	370
Voltage range	V	200-240	200-240	200-240	200-240
Weight	kg	16	26	47	54
Dimensions W/D/H	mm	500/600/510	1000/600/600	1200/700/400	1800/700/400

# CATALYTIC CONVERTER/ EXHAUST BLOWER/ INTERMEDIATE FAN



Technical data		KN2	DG2	ZwL2
Max. air capacity/h	m <sup>3</sup>	300	80	390
Exhaust pipe Ø	mm	150	80	150
Power max.	W	600	30	45
Voltage range	V	200 - 240	200 - 240	200 - 240
Weight	kg	4,4	2,9	1,9
Dimensions D/H	mm	170/390	160/480	200/155

# Accessories

- ✓ standard
- optionally available
- ⌚ optionally available, but with reservations
- ✘ not compatible

Accessories Preheating furnaces		KM	GL
8102000001	Thermocouple PtRh-Pt, 160mm	✓	✘
8102000002	Thermocouple PtRh-Pt, 190mm	✘	✓
8102000004	Ceramic tray KM, 140/170mm	✓	✘
8102000005	Ceramic tray GL, 200/250mm	✘	✓
8102000003	Exhaust tube	✓	✓
8103000001	Door insulation KM, 242/185	✓	✘
8103000002	Door insulation GL, 260/200	✘	✓

Accessories Extractor hoods	DU1	DU2	DU3/2	DU3/3
8103000004 Grease filters	✘	✘	✓	✓

Accessories Catalytic converter   Exhaust blower   Intermediate fan	KN2
8103000005 Filter honeycombs KN2; replacement set	✓
8103000006 Insulation fleece KN2	✓
8103000007 Mounting adapter KN2	✓



## Details

- |                |                     |               |                  |
|----------------|---------------------|---------------|------------------|
| <b>1</b> KM1   | Preheating furnace  | <b>5</b> DG2  | Exhaust blower   |
| <b>2</b> GLP7  | Preheating furnace  | <b>6</b> OA41 | Furnace adapter  |
| <b>3</b> DU3/3 | Extractor hood      | <b>7</b> ZwL2 | Intermediate fan |
| <b>4</b> KN2   | Catalytic converter |               |                  |

**DURABLE.  
RELIABLE.  
ACCURATE.**

**DENTAL**

**MIHM-VOGT GmbH & Co. KG**  
Friedrich-List-Straße 8  
76297 Stutensee-Blankenloch  
Germany

Web [www.mihm-vogt.de](http://www.mihm-vogt.de)  
Mail [info@mihm-vogt.de](mailto:info@mihm-vogt.de)

